



VIPRE Antivirus Quick Start Guide

Welcome! VIPRE® Antivirus offers PC users security against more complex and malicious threats with its powerful anti-malware protection, while eliminating the performance and resource problems of many older, traditional antivirus products. The solution combines antivirus, antispyware, anti-rootkit and other technologies into a seamless, tightly-integrated product.

VIPRE (Virus Intrusion Protection Remediation Engine) is uniquely designed to reduce computer frustration with its low system resource usage, faster boot times, few popups, and a broad-range of detection and remediation of viruses, trojans, worms, and spyware.

This **Quick Start Guide** allows you to jump in and start scanning and protecting your computer from viruses, malware, and other unwanted applications right away. It covers the basic steps needed to get VIPRE up and running: Installing, Using the Wizard, and Scanning your computer for malware.

1. Installing VIPRE

Running more than one antivirus, antispyware, or antimalware product (e.g. McAfee, Norton, etc.) with real-time protection turned on can cause serious degradation in your computer's performance. Only one should be active at a time. In addition, you can use several scan tools to perform manual scans, but do so one at a time for the best performance. Please refer to those products' documentation for specific advice.

Note: If you are upgrading from CounterSpy® v. 2.5 or later, this install will first uninstall your older version completely and then install VIPRE v.4.0. You will need to reconfigure your settings due to the extent of changes in the newer version. After installing VIPRE, the VIPRE Setup Wizard automatically runs allowing you to do this.

1. To install VIPRE from a download, open **Windows Explorer**, navigate to the location where you saved the installation file, and double-click the file.
-or-
To install VIPRE from a CD, insert the **CD** in the disk drive. On most Windows Operating Systems, the installation should start automatically. If not, open **Windows Explorer**, navigate to the CD drive, double-click the `setup.exe` file, and then select "Install VIPRE" from the menu.

Warning: When choosing a Destination Folder for installation, it is recommended to use the default location; however, if you change the location, it's important to adhere to the following rules: must be a fixed drive; must NOT be under the Windows directory; must NOT be on the root of the drive; the file path must be less than 200 characters; and must NOT use any of the characters—;,%#\$—in the path.

2. Follow the prompts in the **InstallShield Wizard for VIPRE Antivirus**.
3. After VIPRE is installed, you will be prompted to **restart** your computer. You must restart before VIPRE can begin protecting your computer.

After restarting your computer, the VIPRE Setup Wizard automatically starts.



2. Using the VIPRE Setup Wizard

After installing VIPRE and your computer restarts, the Setup Wizard opens. The wizard provides you a quick way to initially set up VIPRE to get you protecting your computer right away.

The Setup Wizard covers the following:

- **Email Protection:** VIPRE's Email Protection is a behind-the-scenes tool that protects your computer from potentially harmful inbound and outbound email messages. As long as you have email protection enabled, your computer is protected with automatic email scanning of all attachments for malware and viruses without you having to do anything. VIPRE supports the following email programs: MS Outlook 2000+, Outlook Express 6.0+, and Windows Mail on Vista. Any POP3/SMTP client is also supported.
- **ThreatNet™:** ThreatNet is a worldwide network of thousands of CounterSpy, VIPRE Antivirus, and VIPRE Antivirus Premium users sharing and identifying potentially dangerous program files (both through manual submissions and automatically), resulting in the blocking of new malware almost as quickly as it is released into the wild. ThreatNet also enables Sunbelt Software to track new outbreaks and compile statistical information. While using ThreatNet is optional, it is recommended.

Note: Personal information that can associate you or your computer will NEVER be included with any sent data. For more information, see Sunbelt Software's privacy policy at sunbeltsoftware.com.

- **Activate and Register:** If you have already purchased VIPRE, we recommend that you enter your Activation key now and register to receive the latest information and Technical Support assistance. Your Activation key can be found in the email we sent you. If you are unable to find it, please call our online shop for assistance (800-336-3166). If you are upgrading from CounterSpy, you will be issued a new Activation key; your old key will no longer work.

Once you click **Finish**, your selections are applied and VIPRE automatically starts and downloads the latest risk definitions file. Also, a short demo launches to orientate you to VIPRE. If you rather not launch the product demo and start using VIPRE right away, deselect the check box.

3. Scanning Your Computer for Malware

Now you are ready to begin a scan of your computer. You can perform three different types of scans - Quick, Deep System, and Custom - to detect and remove malware from your computer.

For detailed descriptions of the scanning features, see the **Scan** screen in the online Help.

Note: You can continue to use other VIPRE features while running a scan.

To run a scan and remove malware from your computer:

1. Click the **Scan** tab. The Scan screen displays.
2. Select one of the following:

- **Quick Scan:** Select to scan commonly affected areas of your computer. This scan is usually shorter in duration than the Deep System Scan. You can configure additional options in the Scan Options tab on the Settings dialog box.
 - **Deep System Scan:** Select to perform a thorough scan of all areas of your computer. Depending on how full your hard drive is, this could take longer. You can configure additional options in the Scan Options tab on the Settings dialog box.
3. Optionally, select **Shutdown computer after scan** to have VIPRE automatically shutdown your computer after the scan completes.
 4. Click **Scan Now**. Your selected scan begins to run, displaying the Scan Progress screen allowing you to view the progress of the scan, pause the scan, or cancel it.

Once the scan completes and has found risks, the **Scan Results** screen displays the detected risks with the recommended clean action listed under the **Clean Action** column. If the scan reveals no risks, skip to step 5.

5. Click **Clean**. VIPRE cleans the risks based on the recommended clean action listed in the Clean Action column.

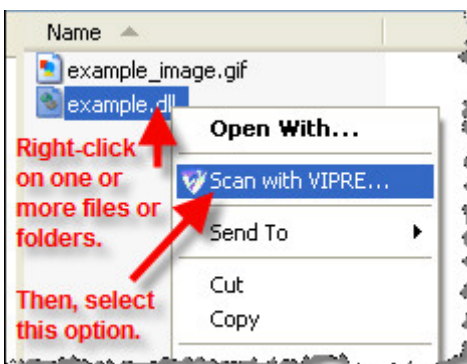
Once the risks are cleaned, the Clean Results screen displays the details and summary of the scan.

Note: For more information on cleaning risks, see Managing Scan Results in the Help or User Guide.

6. Click **Done**. The Clean Results screen changes to the Scan screen. Your computer is now clean of malware.

Note: After the cleaning is finished, you may be prompted to reboot your machine and run VIPRE's Boot Time Cleaner in order to completely remove a "hard to remove" risk. Please see the online Help for more information.

You can right-click on one or more files or folders from Windows Explorer to run a scan.



You can start VIPRE two ways:




- Double-click the **VIPRE** icon shortcut (pictured below) on your desktop.



VIPRE

- Click **Start** and then select **Programs>Sunbelt Software>VIPRE Antivirus + Antispyware>VIPRE**.

For more information on working with other features in VIPRE, please refer to the online Help, by clicking the **Help** icon  **HELP** in the application, or download the User Guide from the www.sunbeltsoftware.com.

